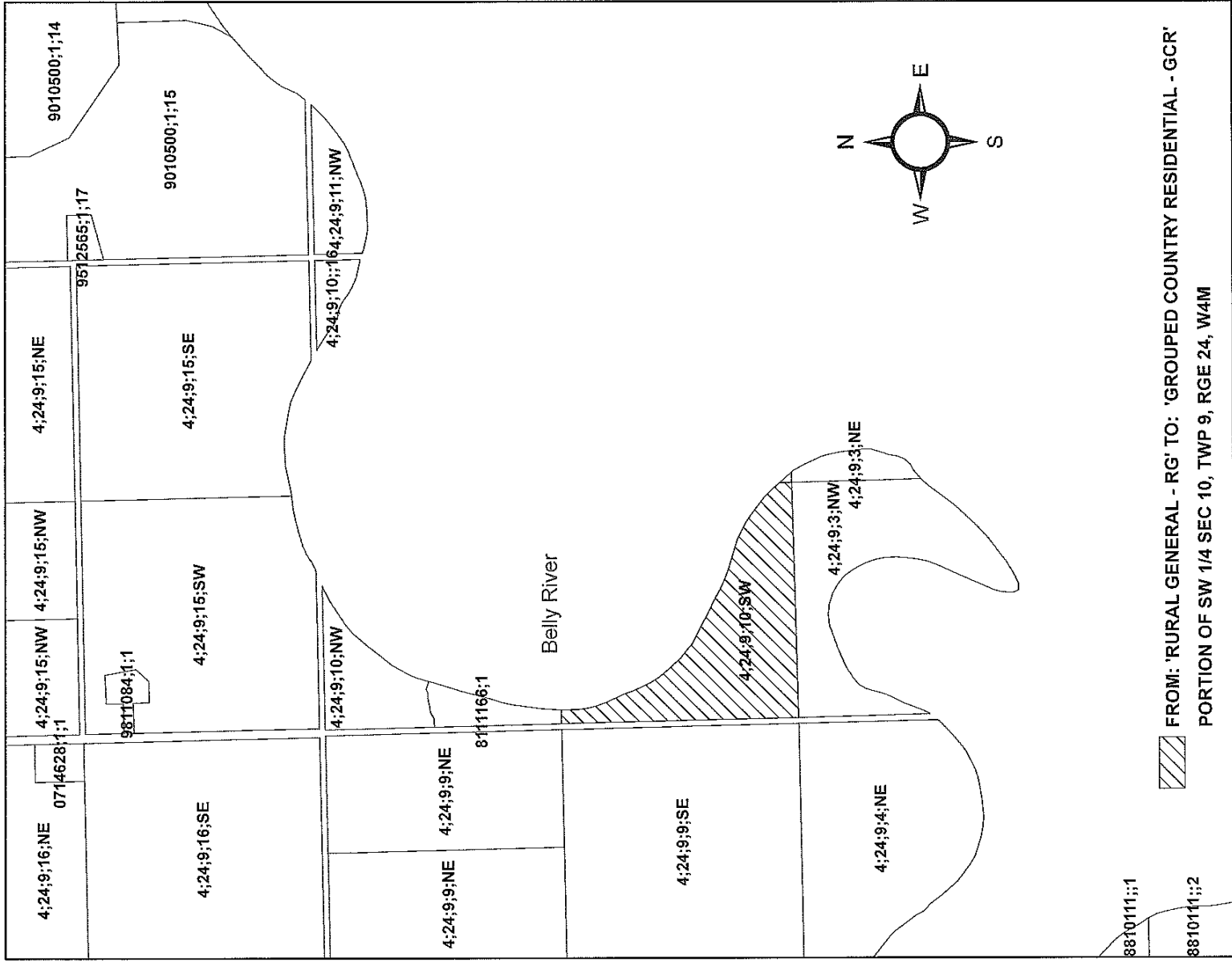



**MUNICIPAL DISTRICT OF WILLOW CREEK NO. 26
 LAND USE DISTRICT REDESIGNATION
 SCHEDULE 'A'**

**FROM 'RURAL GENERAL - RG' TO
 'GROUPED COUNTRY RESIDENTIAL - GCR'**

SEPTEMBER 23, 2009



 FROM: 'RURAL GENERAL - RG' TO: 'GROUPED COUNTRY RESIDENTIAL - GCR'
 PORTION OF SW 1/4 SEC 10, TWP 9, RGE 24, W4M

