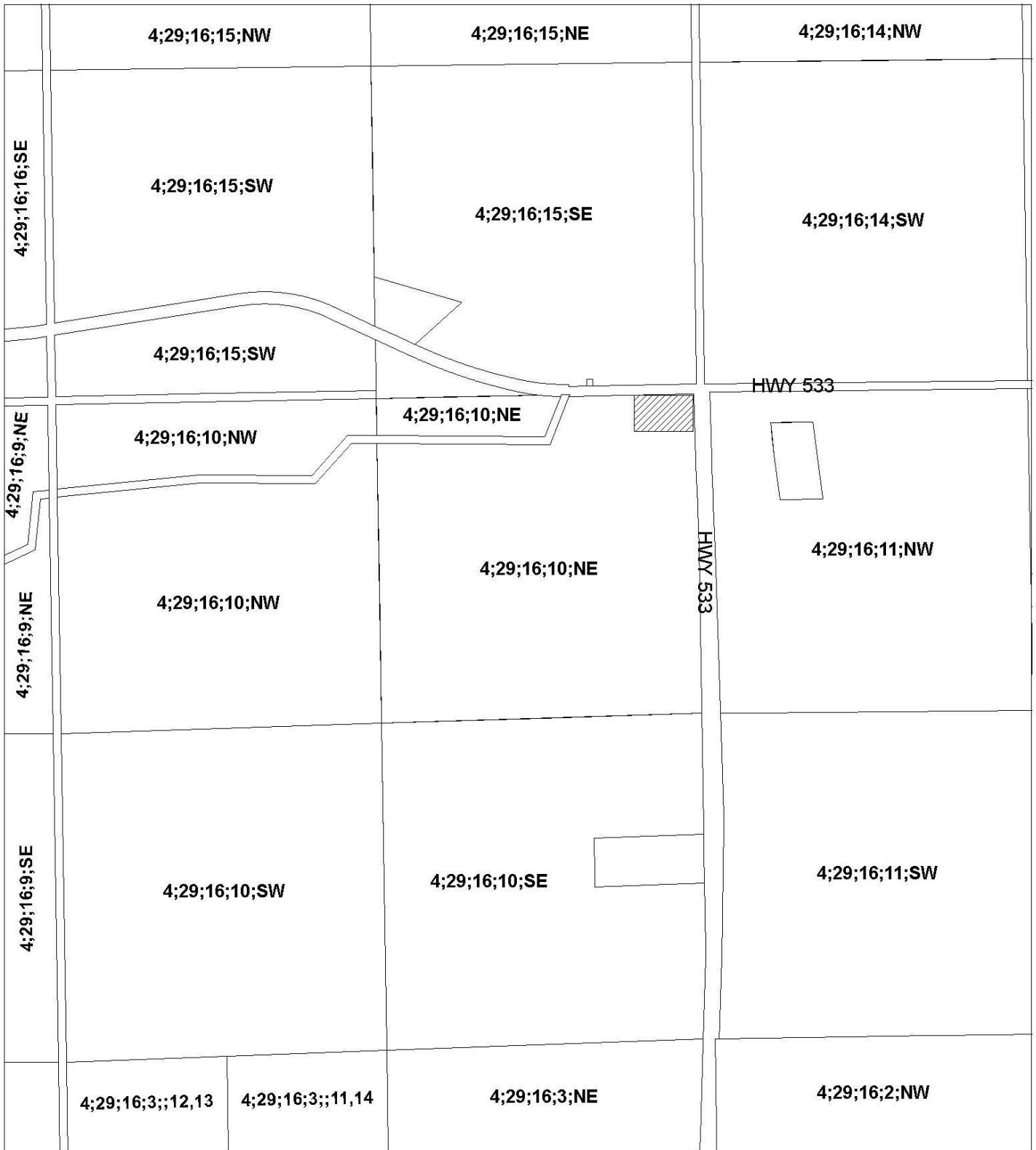


LAND USE BYLAW AMENDMENT
SCHEDULE 'A'



4 ACRES WITHIN NE 10-16-29-4
FROM : 'RURAL GENERAL - RG' TO
'VACANT COUNTRY RESIDENTIAL - VCR'



NOT TO SCALE



PREPARED BY: DEVELOPMENT DEPARTMENT
DATE: APRIL 21, 2010