

**MUNICIPAL DISTRICT OF WILLOW CREEK NO. 26
IN THE PROVINCE OF ALBERTA**

BYLAW NO. 1607

BEING a bylaw of the Municipal District of Willow Creek No. 26 in the Province of Alberta, to amend Bylaw No. 1250, being the municipal Land Use Bylaw.

WHEREAS the Municipal District Council is in receipt of a request to redesignate a portion of lands within the municipality as shown on the map in Schedule 'A' attached hereto and legally described as:

MERIDIAN 4 RANGE 25 TOWNSHIP 13
SECTION 31

THAT PORTION OF THE NORTH WEST QUATER
WHICH LIES WEST OF BLOCK 1 ON PLAN 9211941
CONTAINING 18.74 HECTARES (46.31 ACRES) MORE OR LESS
EXCEPTING THEREOUT:

PLAN	NUMBER HECTARES	(ACRES)	MORE OR LESS
PUBLIC WORK	0212688	1.846	4.56

EXCEPTING THEREOUT ALL MINES AND MINERALS

AND WHEREAS the Land Use Bylaw No. 1250 presently designates the said lands as "Reservoir Vicinity - RV".

AND WHEREAS the purpose of proposed Bylaw No. 1607 is to redesignate twelve (12) acres of land contained within the the above-noted lands to "Grouped Country Residential – GCR".

AND WHEREAS the municipality must prepare a corresponding bylaw and provide for its consideration at a public hearing.

NOW THEREFORE, under the authority and subject to the provisions of the Municipal Government Act, Statutes of Alberta, Chapter M-26, 2000, as amended, the Council of the Municipal District of Willow Creek No. 26 in the Province of Alberta duly assembled does hereby enact the following:

1. Lands, illustrated on the map in Schedule 'A' and legally described above, shall be redesignated from 'Reservoir Vicinity - RV' to 'Grouped Country Residential - GCR'.
2. The Land Use District Map shall be amended to reflect this redesignation.
3. Bylaw No. 1250, being the Municipal Land Use Bylaw, is hereby amended.
4. This bylaw shall come into effect upon third and final reading hereof.

READ a **first** time this 19 day of May , 2010.

Reeve – Henery Van Hierden

Municipal Administrator/CAO – Cynthia Vizzutti

READ a **second** time this _____ day of _____, 2010.

Reeve – Henery Van Hierden

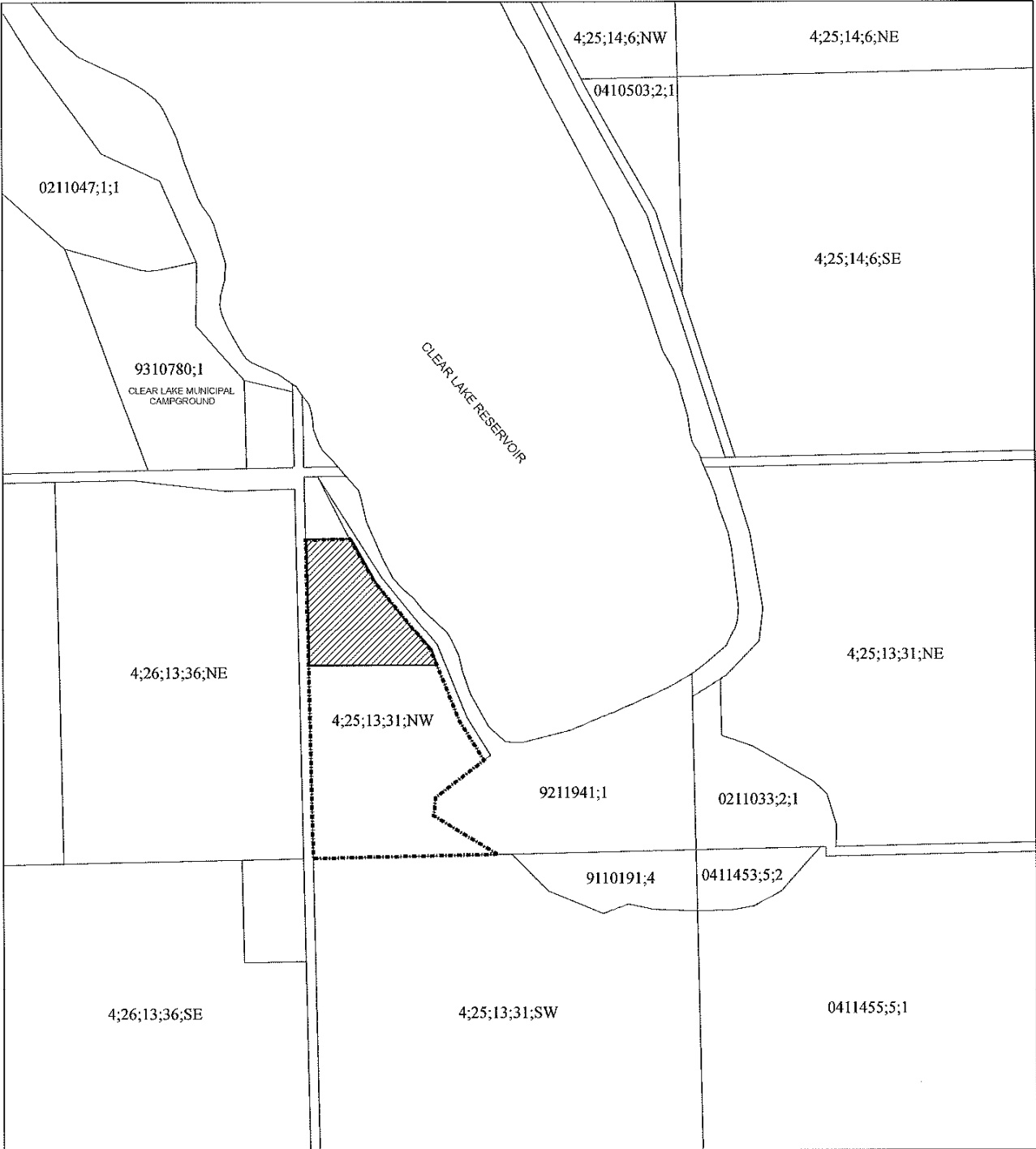
Municipal Administrator/CAO – Cynthia Vizzutti

READ a **third** time and finally **PASSED** this _____ day of _____, 2010.

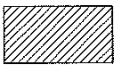
Reeve – Henery Van Hierden

Municipal Administrator/CAO – Cynthia Vizzutti

**LAND USE BYLAW AMENDMENT
SCHEDULE 'A'**



**LAND USE AMENDMENT FROM 'RESERVOIR VICINITY - RV'
TO 'GROUPED COUNTRY RESIDENTIAL - GCR'
Portion of NW 31-13-25-4**



**FROM 'Reservoir Vicinity - RV' TO
'Grouped Country residential - GCR'**



PREPARED BY: DEVELOPMENT DEPARTMENT
DATE: MAY 19, 2010