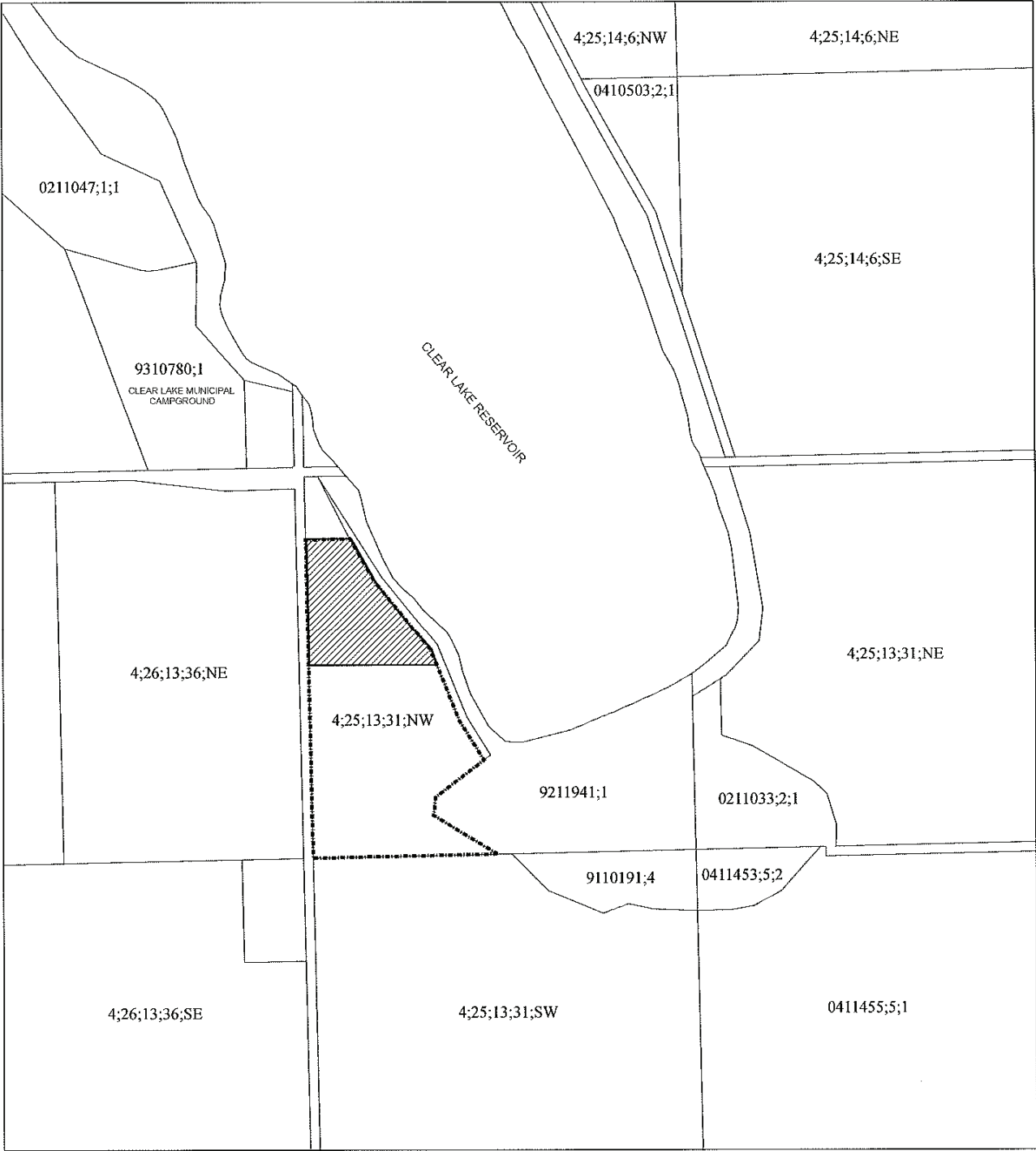
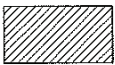


**LAND USE BYLAW AMENDMENT
SCHEDULE 'A'**



**LAND USE AMENDMENT FROM 'RESERVOIR VICINITY - RV'
TO 'GROUPED COUNTRY RESIDENTIAL - GCR'
Portion of NW 31-13-25-4**



**FROM 'Reservoir Vicinity - RV' TO
'Grouped Country residential - GCR'**



MD of Willow Creek
PREPARED BY: DEVELOPMENT DEPARTMENT
DATE: MAY 19, 2010