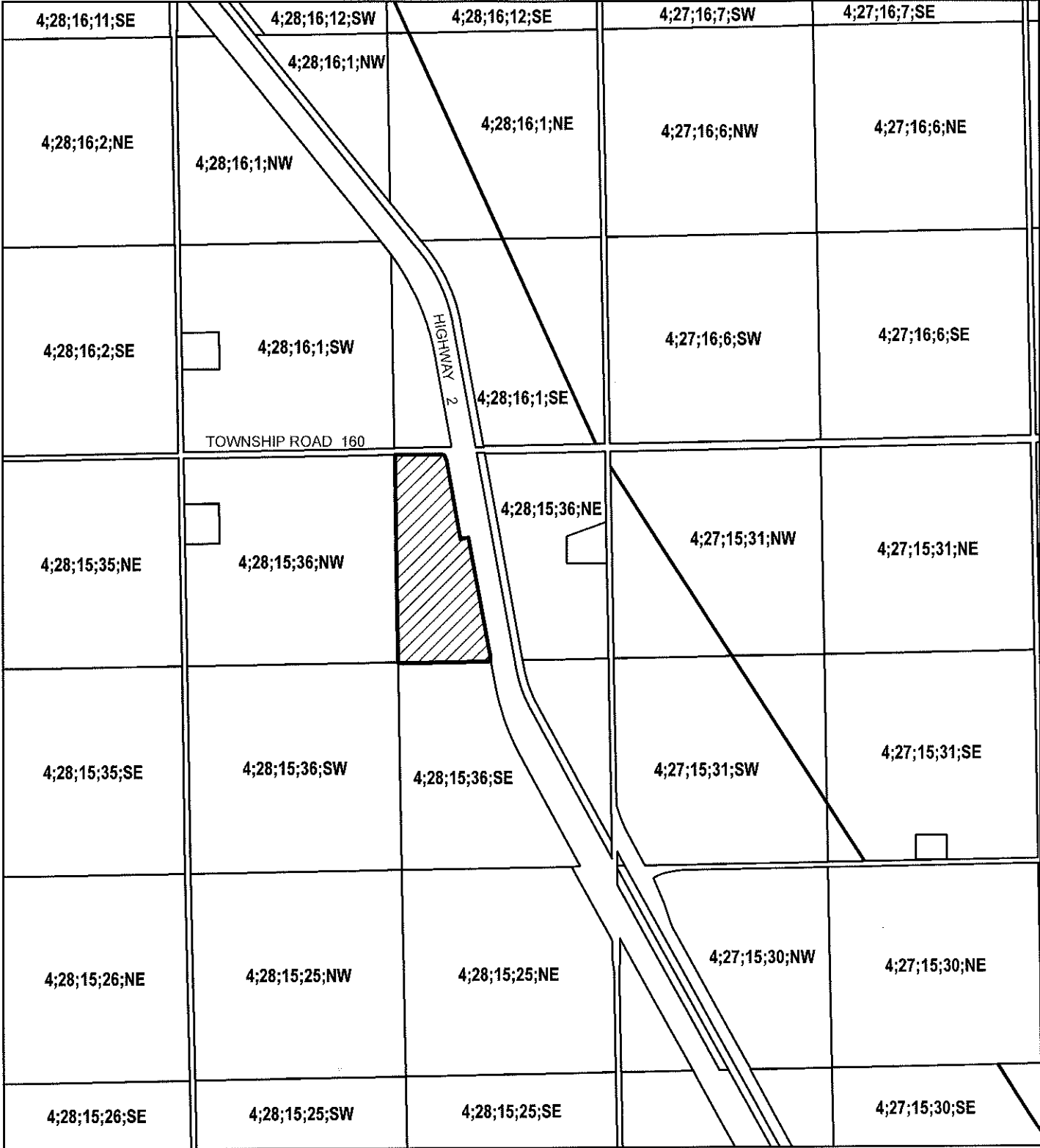
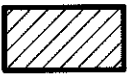


**LAND USE BYLAW AMENDMENT
SCHEDULE 'A'**



LAND USE AMENDMENT FROM 'RURAL GENERAL - RG'
TO 'RURAL RECREATIONAL - RR'
Portion of NE 36-15-28-4



FROM 'Rural General - RG' TO
'Rural Recreational - RR'



PREPARED BY: DEVELOPMENT DEPARTMENT
DATE: MAY 25, 2010