



MD of Willow Creek

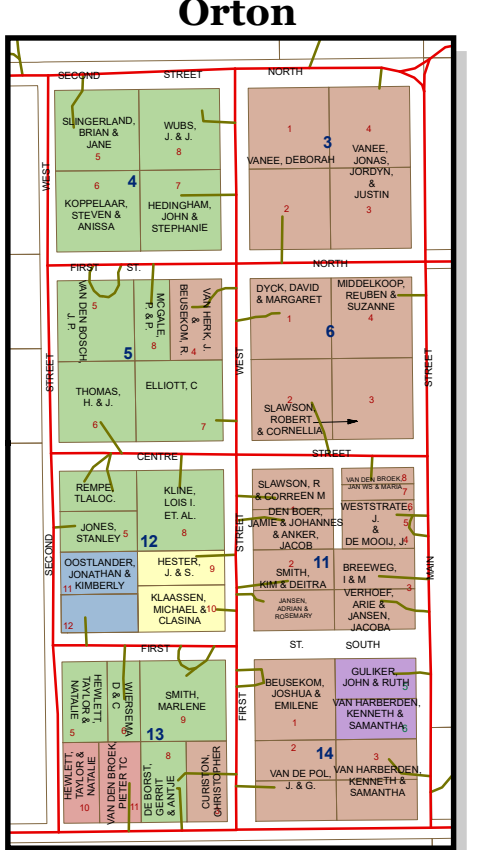
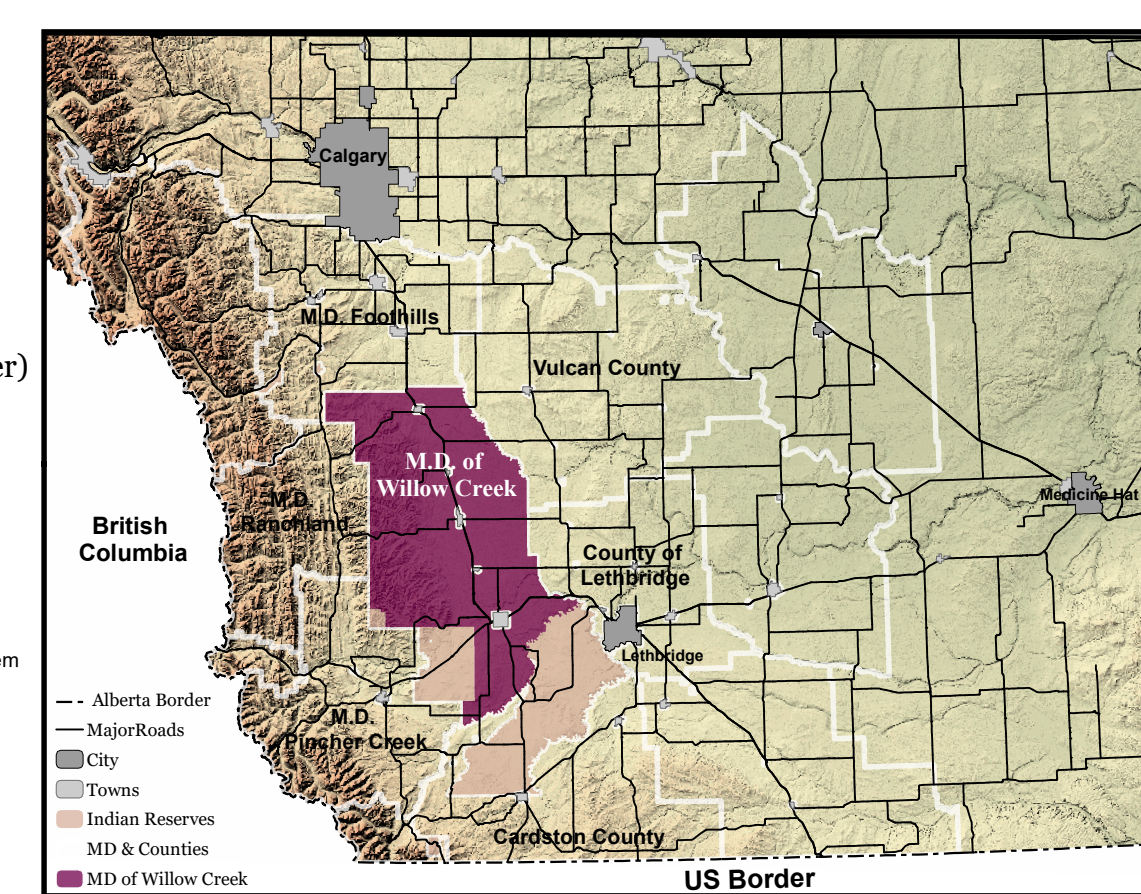
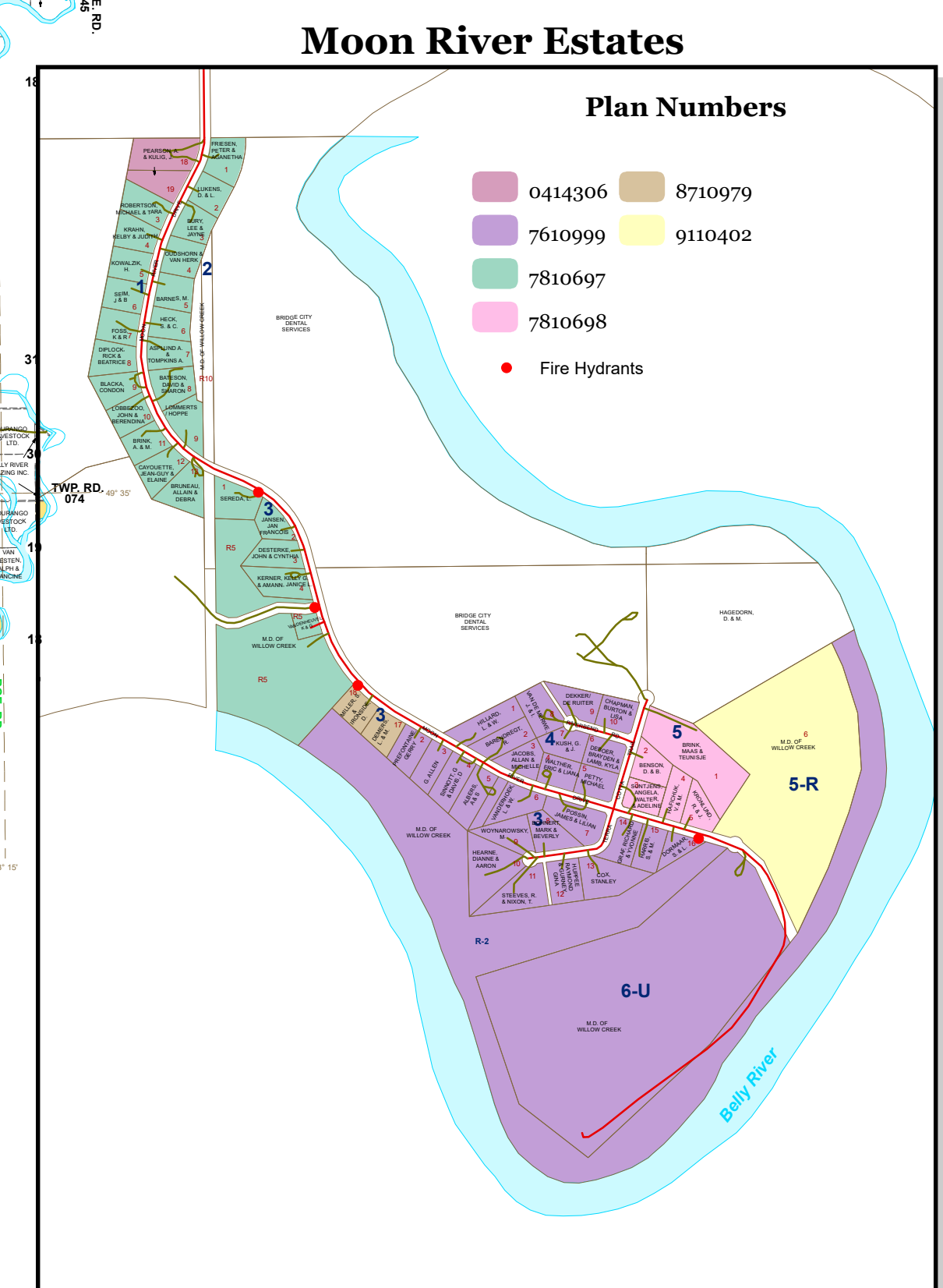
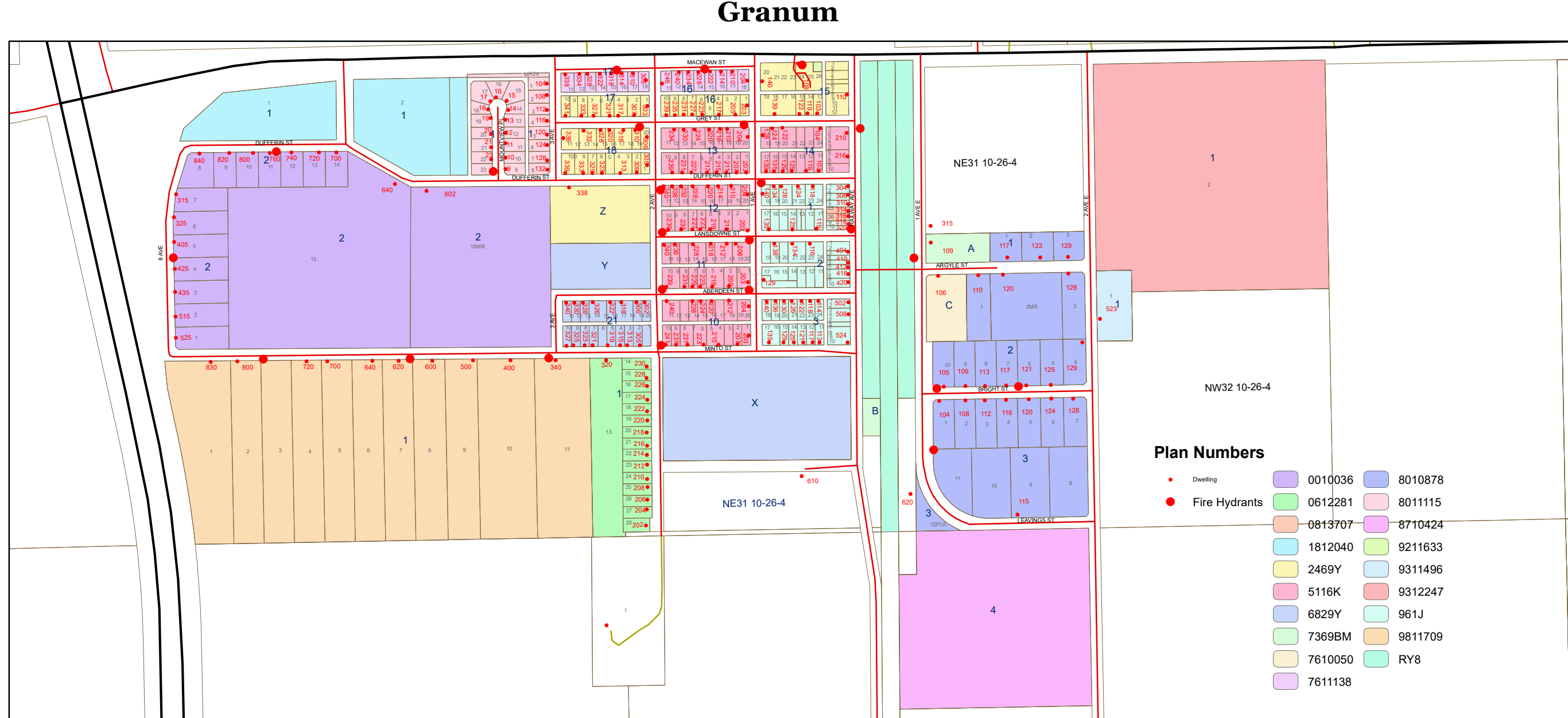
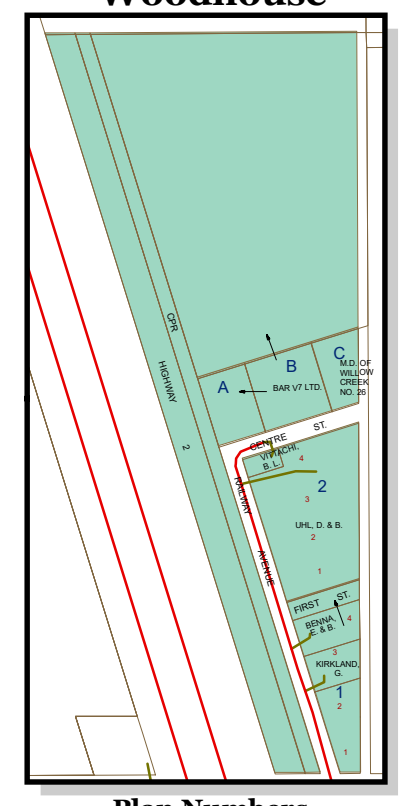
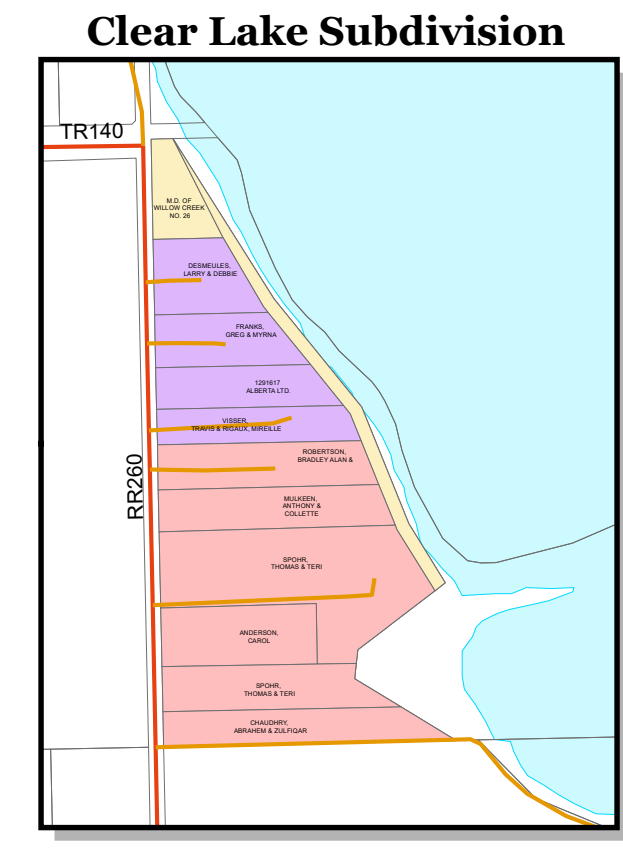
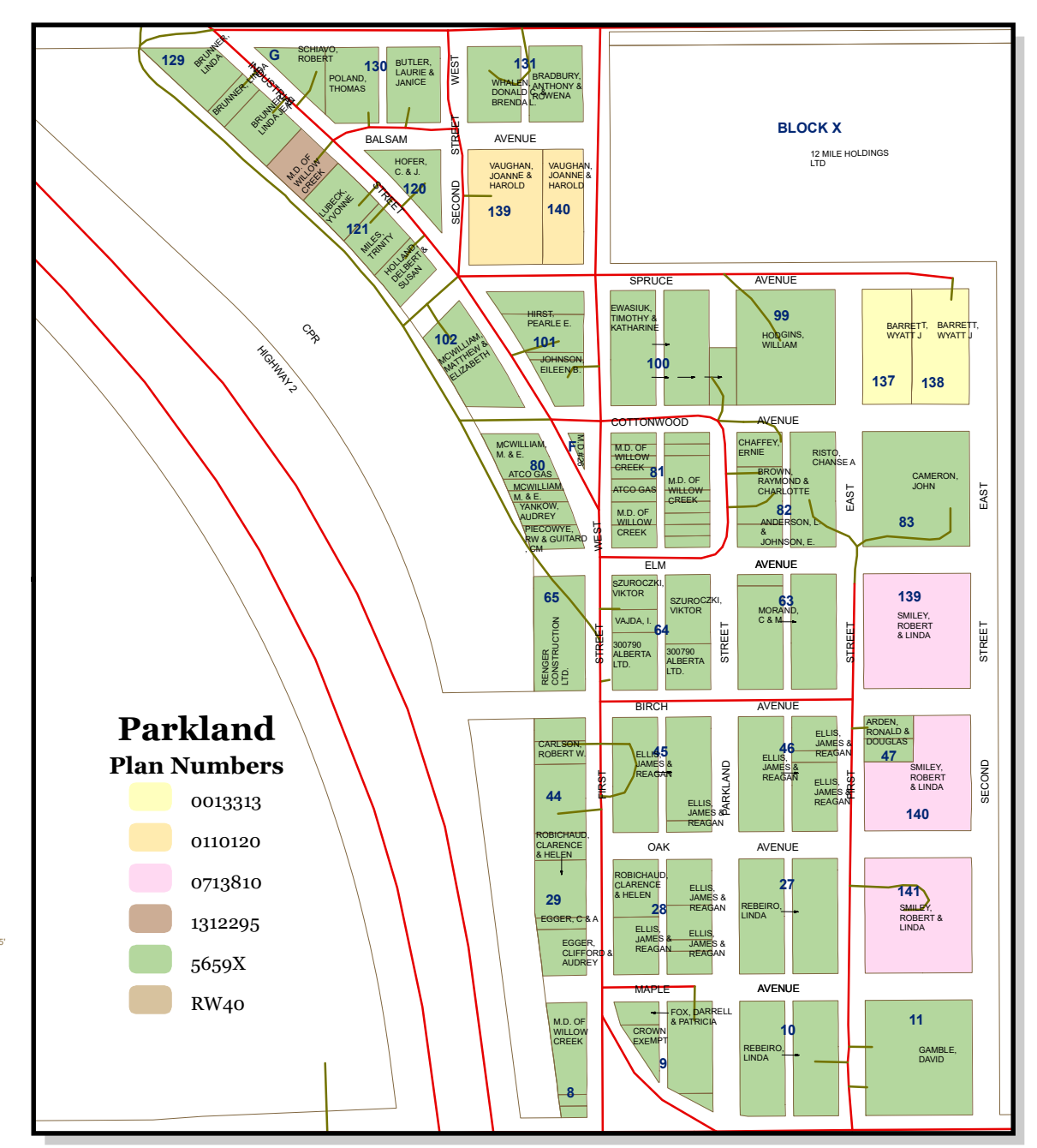
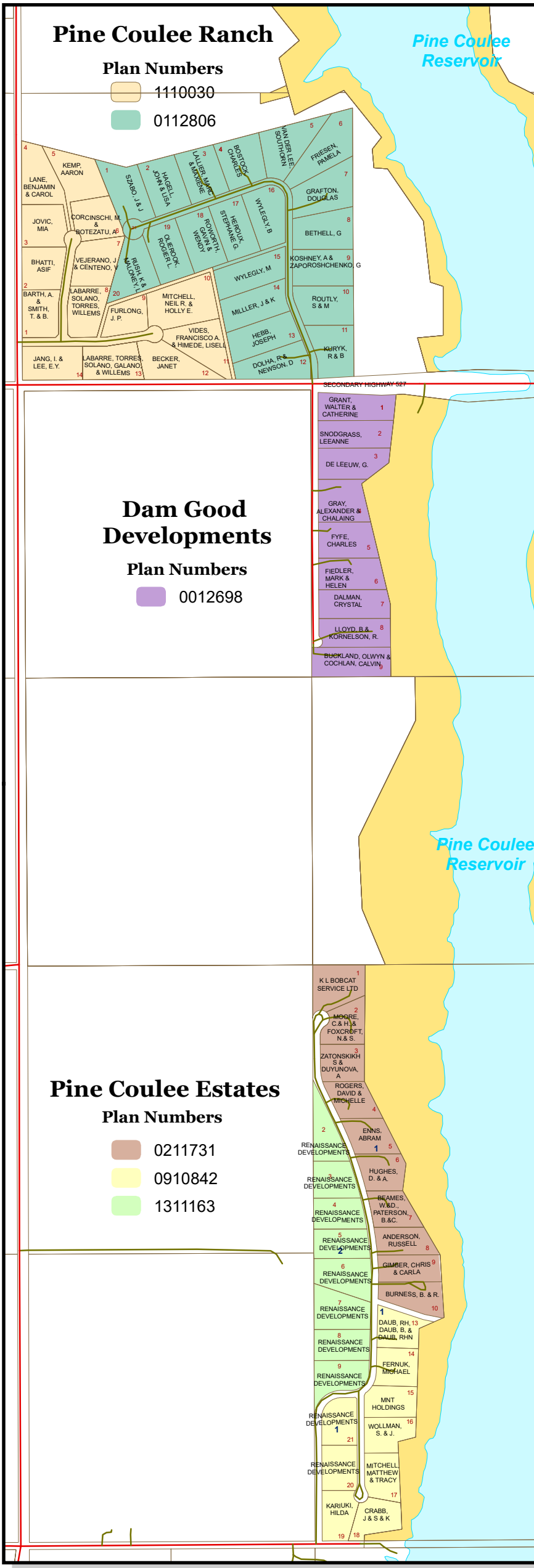
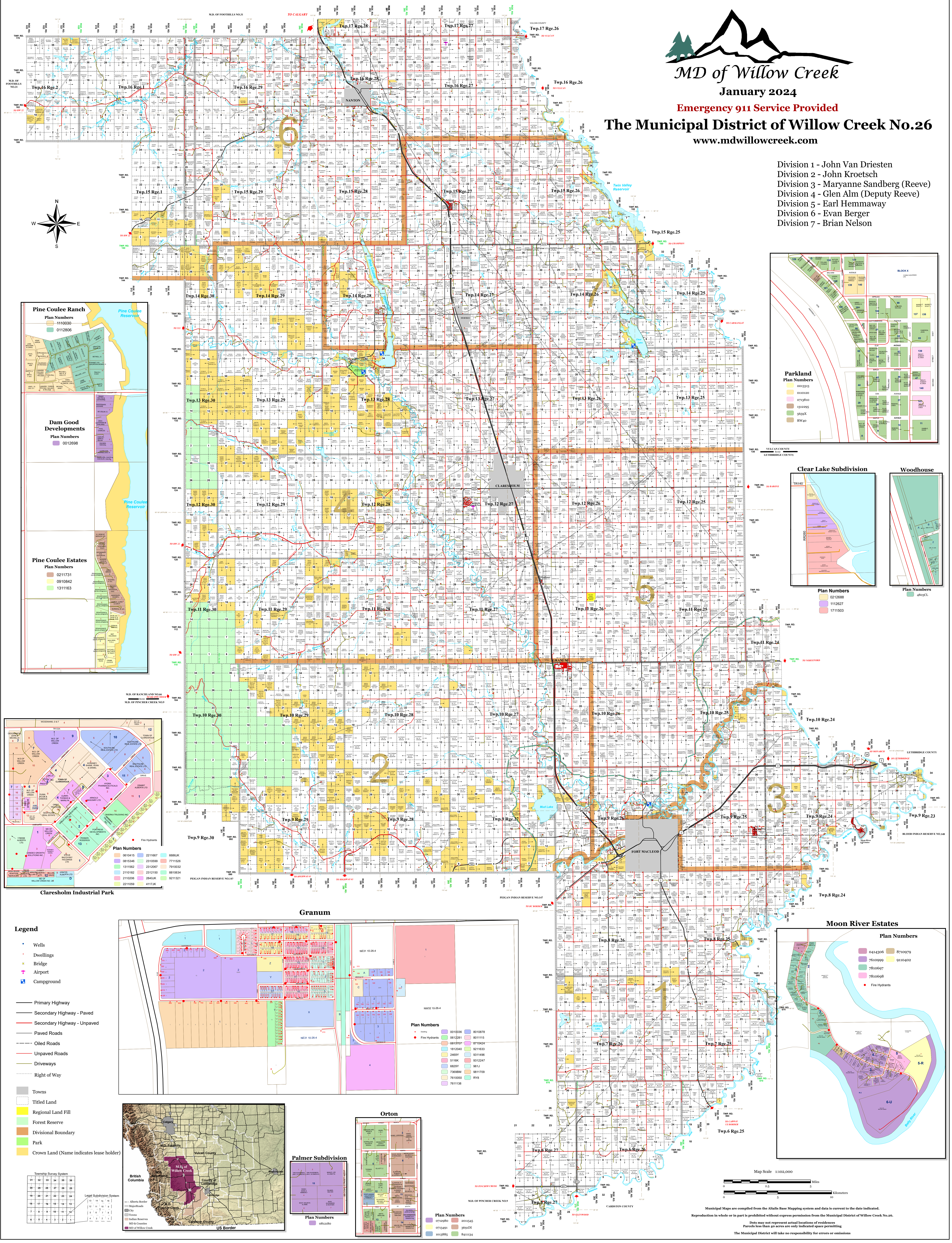
January 2024

Emergency 911 Service Provided

The Municipal District of Willow Creek No.26

www.mdwillowcreek.com

- Division 1 - John Van Driesten
- Division 2 - John Kroetsch
- Division 3 - Maryanne Sandberg (Reeve)
- Division 4 - Glen Alm (Deputy Reeve)
- Division 5 - Earl Hemmaway
- Division 6 - Evan Berger
- Division 7 - Brian Nelson



- Legend**
- Wells
 - Dwellings
 - Bridge
 - Airport
 - Campground
 - Primary Highway
 - Secondary Highway - Paved
 - Secondary Highway - Unpaved
 - Paved Roads
 - Oiled Roads
 - Unpaved Roads
 - Driveways
 - Right of Way
 - Towns
 - Titled Land
 - Regional Land Fill
 - Forest Reserve
 - Divisional Boundary
 - Park
 - Crown Land (Name indicates lease holder)

Township Survey System

31	32	33	34	35	36
34	35	36	37	38	39
33	34	35	36	37	38
32	33	34	35	36	37
31	32	33	34	35	36
30	31	32	33	34	35
29	30	31	32	33	34
28	29	30	31	32	33
27	28	29	30	31	32
26	27	28	29	30	31
25	26	27	28	29	30
24	25	26	27	28	29
23	24	25	26	27	28
22	23	24	25	26	27
21	22	23	24	25	26
20	21	22	23	24	25
19	20	21	22	23	24
18	19	20	21	22	23
17	18	19	20	21	22
16	17	18	19	20	21
15	16	17	18	19	20
14	15	16	17	18	19
13	14	15	16	17	18
12	13	14	15	16	17
11	12	13	14	15	16
10	11	12	13	14	15
9	10	11	12	13	14
8	9	10	11	12	13
7	8	9	10	11	12
6	7	8	9	10	11
5	6	7	8	9	10
4	5	6	7	8	9
3	4	5	6	7	8
2	3	4	5	6	7
1	2	3	4	5	6

Map Scale 1:102,000
Municipal Maps are compiled from the Atlas Base Mapping system and data is current to the date indicated.
Reproduction in whole or in part is prohibited without express permission from the Municipal District of Willow Creek No. 26.
Dots may not represent actual locations of residences
Parcels less than 40 acres are only indicated space permitting
The Municipal District will take no responsibility for errors or omissions